

Name:

Studio Arts 11: Drawing & Painting

Active Date:

## Course Activation Assignment

Welcome to EBUS Academy Distributed Learning. Enclosed you will find everything needed to complete your course activation assignment. Once you have completed this assignment you can email it to [activation@ebus.sd91.bc.ca](mailto:activation@ebus.sd91.bc.ca), fax it to 1-250-567-3943, or mail it to:

EBUS Academy  
Bag 8000, 187 East Victoria St.  
Vanderhoof, BC Canada V0J 3A2  
Phone: 1-800-567-1236



---

### To be considered active in this course you must:

- ▶ Complete a current enrollment form (see [www.ebus.ca](http://www.ebus.ca) - please allow 3 days for processing)
- ▶ Fill out the information below
- ▶ Complete the following activation assignment for this course

### Contact information

Name: \_\_\_\_\_ Personal Email: \_\_\_\_\_

Phone: \_\_\_\_\_ High School: \_\_\_\_\_

Regular progress reports are mailed/emailed out. Please provide email addresses that you would like these reports to go to (e.g. parent, school counselor, etc.). Parent email addresses are mandatory for students under age 19.

Parent Name/Email: \_\_\_\_\_

Counselor or Supervisor Name/Email: \_\_\_\_\_

Name/Position/Email: \_\_\_\_\_

Hope to finish this course in:  Semester (5 months)  Linear (10 months)

---

Once these requirements are met, please visit your 'My Classes' icon in FirstClass to continue.

*If you have not yet received your welcome email with FirstClass instructions, please call our Help Desk at 1-800-567-1236 ext. 2255. If you are a continuing student, please use your existing EBUS login.*

Name: \_\_\_\_\_

Email: \_\_\_\_\_



# STUDIO ARTS 11: DRAWING & PAINTING

## Activation Assignment

Please submit your work to [activation@ebus.sd91.bc.ca](mailto:activation@ebus.sd91.bc.ca) or by fax to 1-250-567-3943.  
Once your assignment has been received you will be contacted by a teacher.

### Introductory Artwork

*(These 4 activities form the Activation Assignment for this course)*

#### 1. Drawing in Pencil

##### Materials:

- soft pencil
- paper

**Subject:** Open (your choice)

**Time:** Approx 2 - 3 hours

**Assignment:** Show me how well you can draw.

If you think you are not an artist, don't worry. You can't do this wrong. If you try your best, you can't fail. Some ideas to draw are your hand, a pet, a plant, something from your imagination.



#### 2. Artwork in Colour

##### Materials:

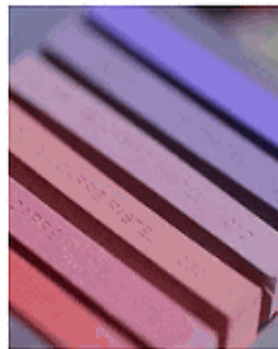
- coloured pencils
- paint, pastel
- paper (or cardstock for painting)

**Subject:** Open (your choice)

**Time:** Approx 2 - 3 hours

**Assignment:** Give me a sense for how you use colour. Use colours that you like.

Some ideas are landscape (outdoor scene), still life (an arrangement of objects, usually on a table), a portrait.



Name: \_\_\_\_\_

Email: \_\_\_\_\_

### 3. Sketchbook Assignment: Collage

(Note: Sketchbooks are an important part of an artist's materials. You will find a sketchbook assignment imbedded in most of the units. Some are directed, others are wide open in order to allow you to practice/ develop various techniques introduced in this course using subjects and styles that most interest you.)



#### Materials:

- Computer for digital graphics or large sheet of paper for magazine images
- 6 - 12 pictures

**Time:** Approx 1- 2 hours

**Assignment:** Find images that you appreciate and that mean something to you, either from magazines or online sources.

- 'Cut and paste' them into your sketchbook in a **creative way**. Remember this is a senior level art course so the collage you produce should reflect that. Strive to make this piece artistically unique and eye-catching.
- Write a short reflection about why you like/ why you chose each image.

### 4. Permission form

I like to submit student artwork to our EBUS [Student Showcase Blog](#), [newsletter](#) & [bulletin board](#). These are great ways to let others enjoy and appreciate all the wonderful projects Ebus students are doing. Only first names are used, but I do need your permission to show your work. *Note: Providing one of the statements is required and is part of your mark. The choice you make is totally up to you and does not affect your mark.*

- Insert your name in your chosen statement below.
- Then 'cut & paste' your chosen sentence to a Word doc and attach it, along with your other 3 assignments.

**YES:**

I, \_\_\_\_\_, give permission for my submitted artwork to be posted on the EBUS blog, newsletter and bulletin board during the 2011-2012 school year.

**NO:**

I, \_\_\_\_\_, do not give permission for my submitted artwork to be posted on the Ebus blog, newsletter and bulletin board during the 2011-2012 school year.

*Note: This AA has 4 assignments to submit. Total time should take about 7- 8 hours and it counts towards 10 % of the course. When I receive all 3 assignments, you will be considered officially activated.*

*Credits: face sketches: b&w from copernicmedia solutions.com colour: Yanire; pastelcolour grid: hichako via Flickr collage from wordpress.com*

Name: \_\_\_\_\_

Email: \_\_\_\_\_

---

***You have reached the end of your Activation Assignment.  
Ensure that all is complete and submit to [activation@ebus.sd91.bc.ca](mailto:activation@ebus.sd91.bc.ca) or by fax to 1-250-567-3943.***