

# Course Activation Assignment

Welcome to EBUS Academy Distributed Learning. Enclosed you will find everything needed to complete your course activation assignment. Once you have completed this assignment you can email it to [activation@ebus.sd91.bc.ca](mailto:activation@ebus.sd91.bc.ca), fax it to 1-250-567-3943, or mail it to:

EBUS Academy  
Bag 8000, 187 East Victoria St.  
Vanderhoof, BC Canada V0J 3A2  
Phone: 1-800-567-1236



---

## To be considered active in this course you must:

- ▶ Complete a current enrollment form (see [www.ebus.ca](http://www.ebus.ca) - please allow 3 days for processing)
- ▶ Fill out the information below
- ▶ Complete the following activation assignment for this course

## Contact information

Name: \_\_\_\_\_ Personal Email: \_\_\_\_\_

Phone: \_\_\_\_\_ High School: \_\_\_\_\_

Regular progress reports are mailed/emailed out. Please provide email addresses that you would like these reports to go to (e.g. parent, school counselor, etc.). Parent email addresses are mandatory.

Parent Email (Name/Email): \_\_\_\_\_

Counselor/Supervisor (Name/Email): \_\_\_\_\_

Name/Position/Email: \_\_\_\_\_

You hope to finish this course in:             Semester (5 months)             10 months

---

Once these requirements are met, please visit your 'My Classes' icon in FirstClass to continue.

*If you have not yet received your welcome email with FirstClass instructions, please call our Help Desk at 1-800-567-1236 ext. 2255. If you are a continuing student, please use your existing EBUS login.*

Name: \_\_\_\_\_

Email: \_\_\_\_\_

# BIOLOGY 12

## Activation Assignment

**Please submit your work to [activation@ebus.sd91.bc.ca](mailto:activation@ebus.sd91.bc.ca) or by fax to 1-250-567-3943.  
Once your assignment has been received you will be contacted by a teacher.**

---

**Learning Goal:** Biology 12 studies the physiology of the human body in depth, beginning with the cell and its structures to the complexity of the different systems that keep our bodies running. This assignment introduces you to many of the different learning outcomes:

- *Cell structure and chemistry*
- *DNA*
- *Systems: digestive, respiratory and urinary*

**Time:** Approximately 1-2 hours

**Score:** /48 marks (5% of course mark)

---

The following questions will give you a brief overview about what you will learn in Biology 12. Please refer to <http://ebus.sd91.bc.ca/~kfroese/ActivationBiology12/Welcome> for the videos.

It is **expected** that you are able to draw and label diagrams in this course. You can print out this assignment and hand label the diagrams and with scan it in to send to the activation site or fax to 1-250-567-3943.

Total score: /48

### Section 1

The Cell Video /10

1. The largest human cell is the \_\_\_\_\_
2. Liver cells are what shape? \_\_\_\_\_
3. The nucleus contains \_\_\_\_\_ which is in the form of chromosomes.
4. The nuclear envelope acts like a \_\_\_\_\_ to control what goes into and out of the nucleus.
5. The watery medium of the cell is called \_\_\_\_\_
6. The \_\_\_\_\_ provides a channel for materials passing between the nucleus and the cells' environment.
7. Lysosomes hold \_\_\_\_\_ needed for digestion.
8. The \_\_\_\_\_ are the main sites of energy production.
9. Protein is made at the \_\_\_\_\_.

Name: \_\_\_\_\_ Email: \_\_\_\_\_

10. Golgi complex is the \_\_\_\_\_ area for cell products.

The DNA Replication Video

/4

1. The enzyme \_\_\_\_\_ is needed to unzip the DNA strands when it begins to replicate (make new copies)
2. RNA Primase lays down an \_\_\_\_\_
3. The \_\_\_\_\_ III lays down new DNA
4. Where are the Okazaki fragments found? \_\_\_\_\_

The Digestive System Video

/5

1. How do we avoid inhaling the food we eat into the lungs?
2. What is chyme?
3. Villi are made up of what 2 main components?
4. How is food moved through the digestive tract?

The Respiratory System Video

/4

1. Where does the gas exchange of oxygen and carbon dioxide occur?
2. The larynx contains the \_\_\_\_\_

Name: \_\_\_\_\_

Email: \_\_\_\_\_

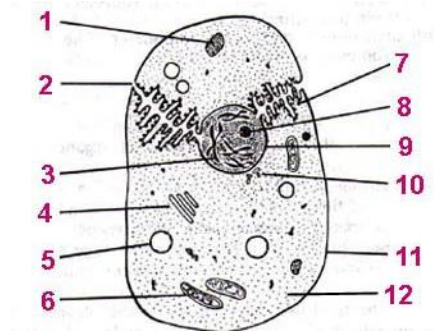
3. List, in the correct order, the passageways that oxygen moves through from the mouth to the capillaries.

**Section 2**

Label the cell:

- 1. \_\_\_\_\_
- 2. \_\_\_\_\_
- 3. \_\_\_\_\_
- 4. \_\_\_\_\_
- 5. \_\_\_\_\_
- 6. \_\_\_\_\_
- 7. \_\_\_\_\_
- 8. \_\_\_\_\_
- 9. \_\_\_\_\_
- 10. \_\_\_\_\_
- 11. \_\_\_\_\_
- 12. \_\_\_\_\_

/12



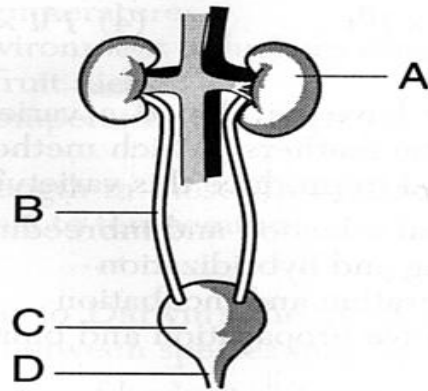
Name: \_\_\_\_\_

Email: \_\_\_\_\_

Label the Urinary System

/4

- A. \_\_\_\_\_
- B. \_\_\_\_\_
- C. \_\_\_\_\_
- D. \_\_\_\_\_

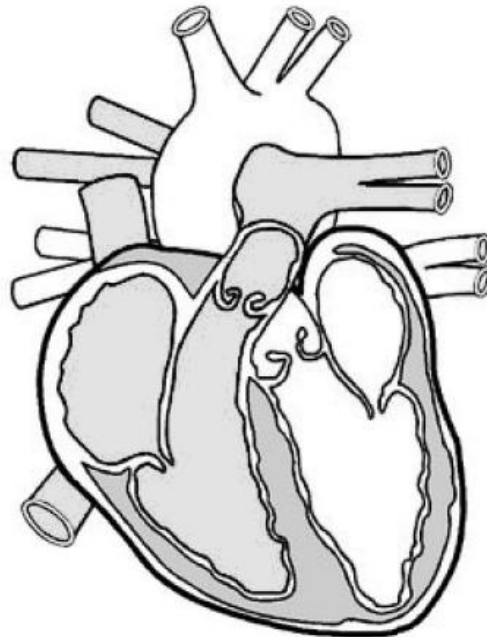


The Heart

/9

Label the diagram of the heart with:

- Right atrium
- Left atrium
- Right ventricle
- Left ventricle
- Aorta
- Pulmonary veins
- Vena cava
- The 4 valves
- Shade in the the area
- of the heart and vessels that carry the deoxygenated blood



---

***You have reached the end of your Activation Assignment. Ensure that all is complete and submit to [activation@ebus.sd91.bc.ca](mailto:activation@ebus.sd91.bc.ca) or by fax to 1-250-567-3943. Once your assignment has been received you will be contacted by a teacher. Thank you and welcome to Biology 12!***